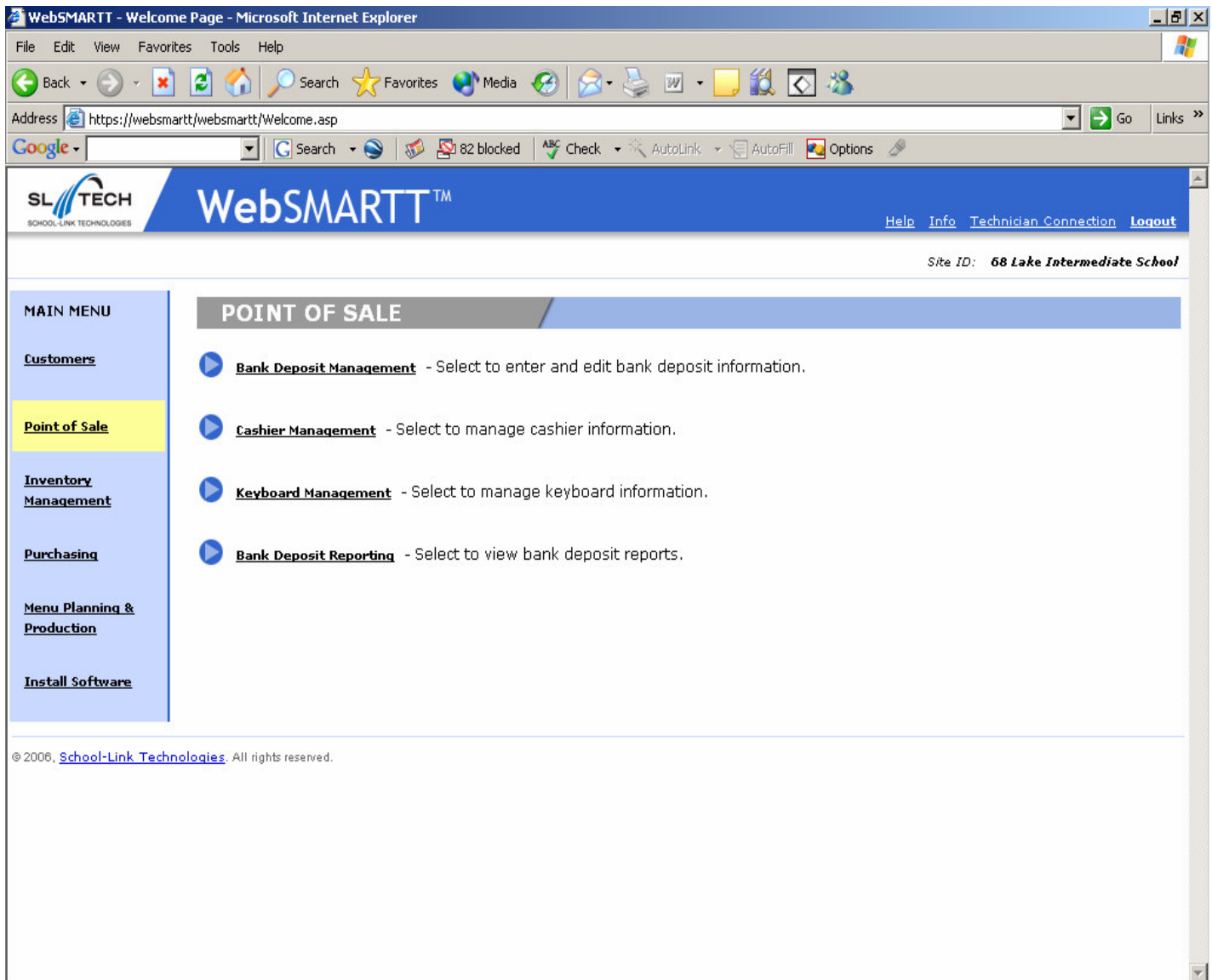
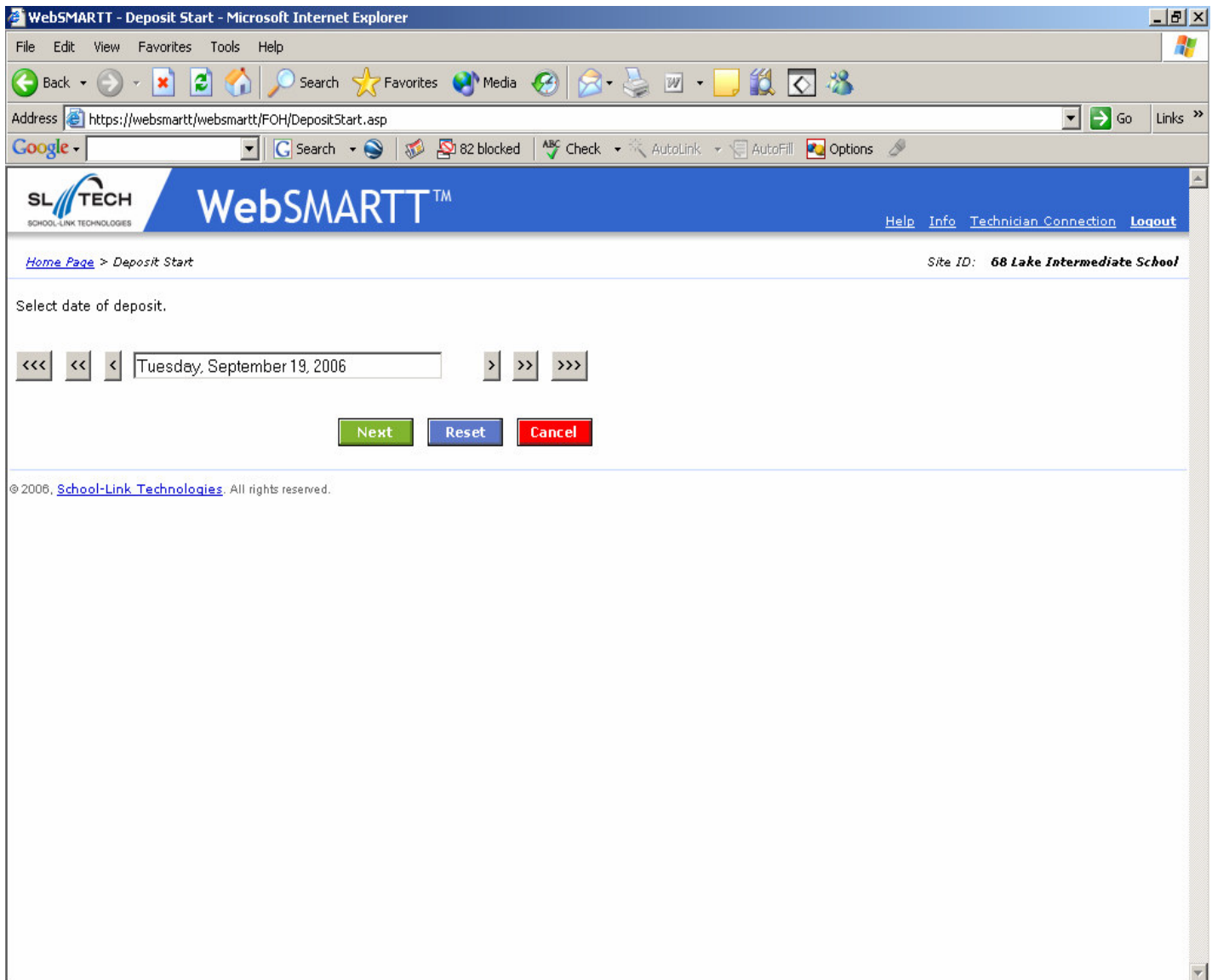


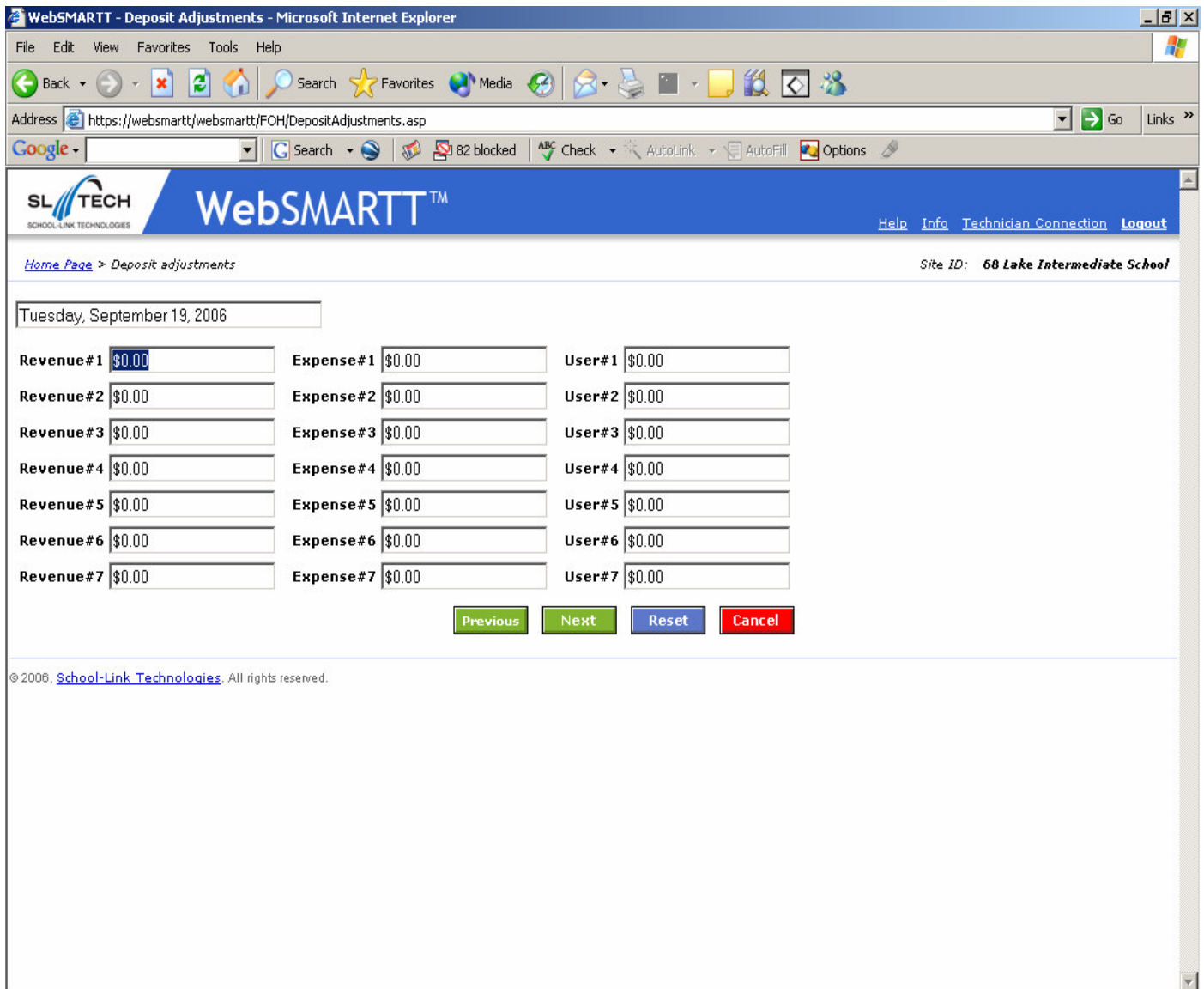
To log into WebSMARTT:



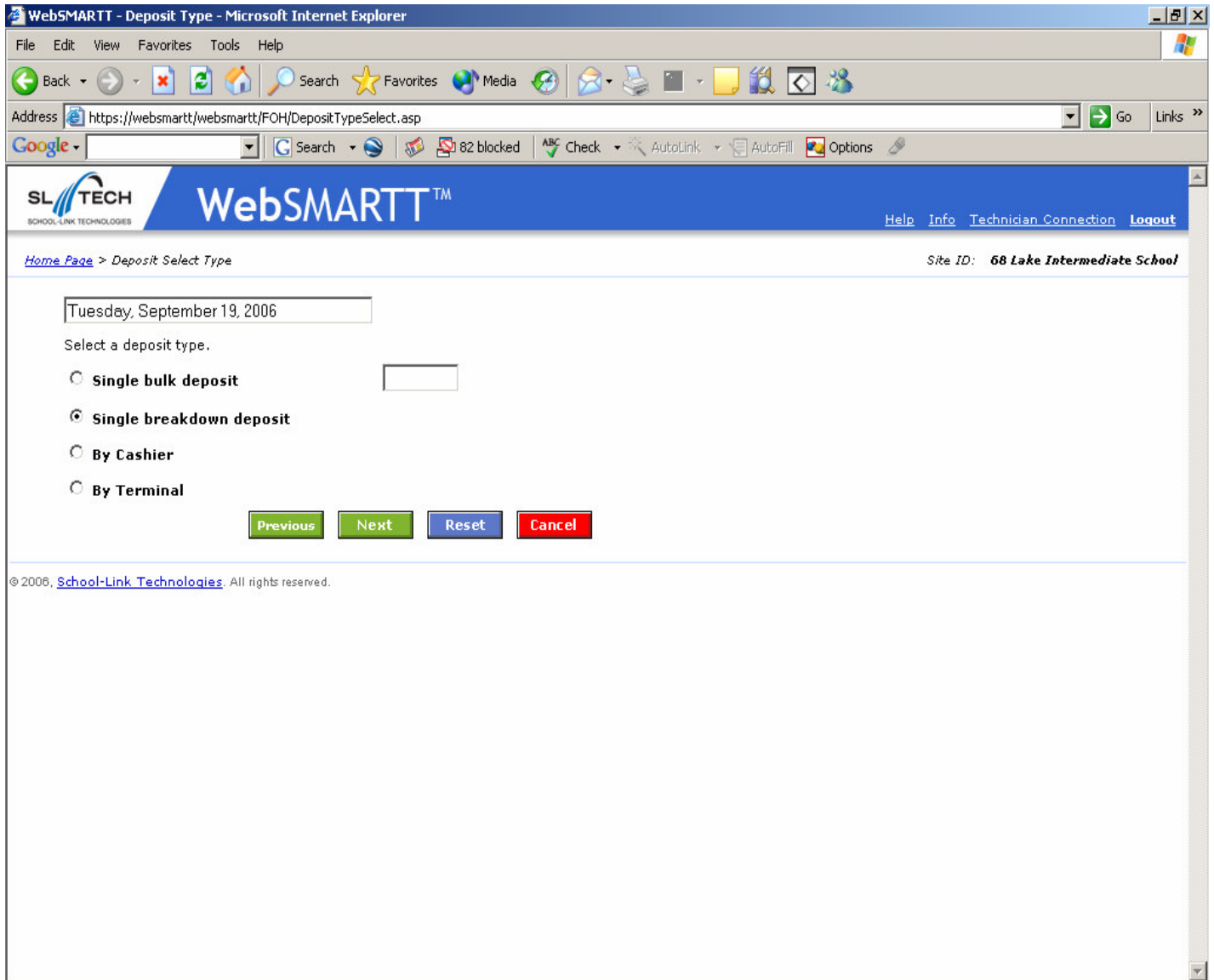
1. Select **Point of Sale** from the left hand column
2. Select **Bank Deposit Management**



3. Verify the date is correct and select **Next**



4. At the Deposit Adjustment screen, just hit the **Next** button



5. Select the **Single Breakdown Deposit** opinion

WebSMARTT - Deposit Breakdown - Microsoft Internet Explorer

File Edit View Favorites Tools Help

Address: https://websmartt/websmartt/FOH/DepositSingleBreakdown.asp

SL TECH SCHOOL-LINK TECHNOLOGIES **WebSMARTT™** Help Info Technician Connection Logout

Home Page > Deposit Entry Site ID: 68 Lake Intermediate School

Tuesday, September 19, 2006

Single deposit breakdown

Deposit amount: \$0.00

Breakdown			
Currency:	Loose coin:	Rolled coin:	
\$100 <input type="text" value="0"/>	Dollars <input type="text" value="0"/>	Quarters <input type="text" value="0"/>	
\$50 <input type="text" value="0"/>	Halves <input type="text" value="0"/>	Dimes <input type="text" value="0"/>	
\$20 <input type="text" value="0"/>	Quarters <input type="text" value="0"/>	Nickels <input type="text" value="0"/>	
\$10 <input type="text" value="0"/>	Dimes <input type="text" value="0"/>	Pennies <input type="text" value="0"/>	
\$5 <input type="text" value="0"/>	Nickels <input type="text" value="0"/>		
\$2 <input type="text" value="0"/>	Pennies <input type="text" value="0"/>	Other <input type="text" value="\$0.00"/>	
\$1 <input type="text" value="0"/>		Checks <input type="text" value="\$0.00"/>	

Change Deposit Type Complete Deposit Cancel

© 2006, School-Link Technologies. All rights reserved.

6. Enter money (must TAB through all fields) and verify Amount and Totals
7. Click **Complete Deposit**

WebSMARTT - Deposit Summary - Microsoft Internet Explorer

File Edit View Favorites Tools Help

Address: https://websmartt/websmartt/FOH/DepositSummary.asp

SL TECH SCHOOL-LINK TECHNOLOGIES WebSMARTT™ Help Info Technician Connection Logout

Home Page > Deposit Summary Site ID: 68 Lake Intermediate School

Tuesday, September 19, 2006

Sales Amounts				
	Breakfast	Lunch	Other	Total
Prepayment at Point of Sale:	\$0.00	+ \$0.00	+ \$0.00	= \$0.00
Operations:	\$0.00	+ \$0.00	+ \$0.00	= \$0.00
Credit Repaid:	\$0.00	+ \$0.00	+ \$0.00	= \$0.00
<hr/>				
Total Sales:	\$0.00	+ \$0.00	+ \$0.00	= \$0.00
Cash Prepayments at Computer:				+ \$0.00
Credit Card Prepayments:		[Does not affect total]		\$0.00
Promotion Prepayments:		[Does not affect total]		\$0.00
Miscellaneous Revenue:				+ \$0.00
Miscellaneous Expenses:				- \$0.00
<hr/>				
Total Cash Expected:				\$0.00

Cash Over / Short

Cash Collected: \$.00 - Total Cash Expected: \$.00 = \$.00

[Change](#) [Continue](#)

© 2006, School-Link Technologies. All rights reserved.

- Click **Continue** to finish process OR select **Change** to make corrections and/or for replication to complete.
Note: Sometimes it takes a few minutes for the servers to “talk”, so you’ll have to wait for this process to finish before continuing.